

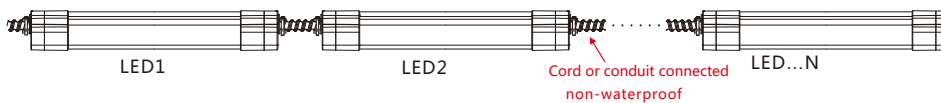


Features:

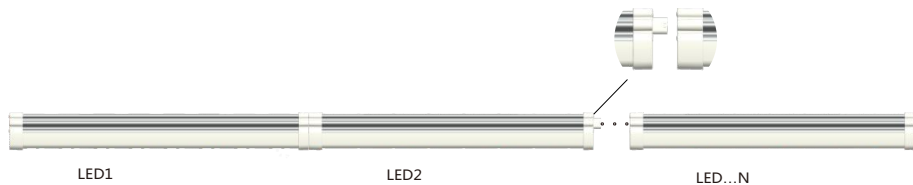
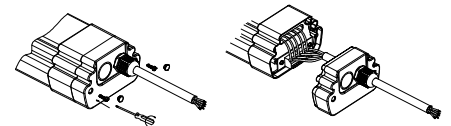
- Wide Beam Angle
- Built in aluminum heat sink , with 94 V0 Fire-Rated PC housing
- TC Model = IP65 rated (With PG9 connector)
- TS Model = Damp rated
- End knock out permits conduit connection on TC Model
 - **Input Voltage** : 120 - 277 VAC
 - **Power** : 25W - 70W
 - **Frequency** : 50 / 60 Hz
 - **Lumen Efficacy** : 120 lumens per watt
 - **Operating Temperature** : -25°F - + 40°C
 - **Power Factor** : >0.9
 - **Beam Angle** : 270°
 - **THD**: <18%
 - **Lifespan** : 50,000 hours
 - Warranty : 5 years
 - Color Temperature : 4000K - 5000K in stock
- Fixture comes with mounting/hanging kit included . Ref# 61009 and 61145
- 5 year warranty
- Full range of options: Emergency backup, Occupancy sensor, 0-10V Dimming, Tandem wiring
- OS = 8" input wire included
- TS = Need Cord at Start of each run
- TC = 1/2" Knock Out Cord Set Available

Options :

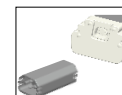
- **DM** : Dimmable Driver
- **OC** : Occupancy Sensor
- **EM** : Emergency Back-up
(Emergency operating temperature -13°F - +104°F)



TPAL-TC



TPAL-TS



Specification/Product Parameters

- **Input voltage:** 90~305VAC
- **Power:** 20W~70W
- **Frequency:** 50/60Hz
- **Lumen Efficacy:** 120LM/W
- **Operating temperature:** -25°~+40°(Emergency minimum temperature -10°C)
- **Power factor:** > 0.9
- **Beam angle:** 270°
- **THD:** < 18%
- **Lifespan :** 50000H

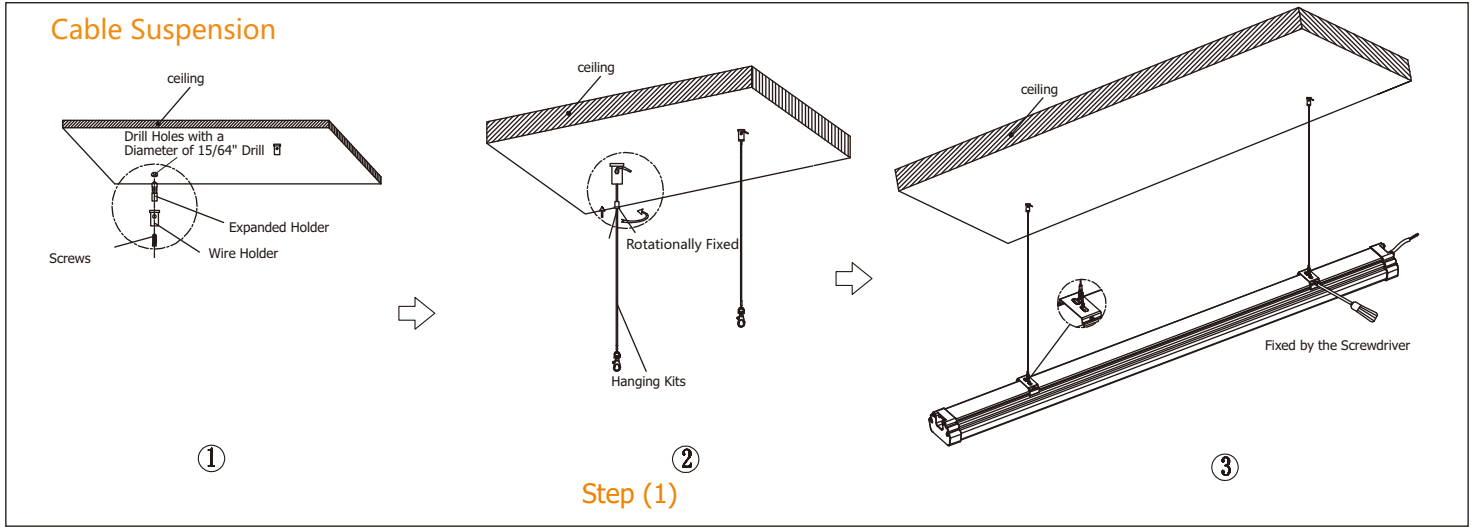
Description	Ref#	Model Number	Lumen	CCT	Watt
24" Strip - TC	61277	TPAL24-2L-40K-UL-OC-TC	2330	4000	20
24" Strip - TC	61275	TPAL24-2L-40K-UL-TC	2330	4000	20
24" Strip - TC	61295	TPAL24-2L-50K-UL-OC-TC	2407	5000	20
24" Strip - TC	61293	TPAL24-2L-50K-UL-TC	2407	5000	20
48" Strip Light - OS	60795	TPAL48-4L-40K-UL	4380	4000	36
48" Strip - TC	61820	TPAL48-4L-40K-UL-OC-TC	4380	4000	36
48" Strip - TC	61278	TPAL48-4L-40K-UL-TC	4380	4000	36
48" Strip - TS	61226	TPAL48-4L-40K-UL-TS	4380	4000	36
48" Strip Light - OS	60819	TPAL48-4L-50K-UL	4524	5000	36
48" Strip - TC	61298	TPAL48-4L50K-UL-OC-TC	4524	5000	36
48" Strip - TC	61296	TPAL48-4L-50K-UL-TC	4524	5000	36
48" Strip - TS	61140	TPLA48-4L-50K-UL-TS	4524	5000	36
48" Strip Light - OS	60801	TPAL48-5L-40K-UL-DM-EM	5301	4000	45
48" Strip Light - OS	60805	TPLA48-5L-40K-UL-EM-TC	5301	4000	45
48" Strip - TC	61284	TPAL48-5L-40K-UL-OC-EM	5301	4000	45
48" Strip Light - OS	60806	TPAL48-5L-40K-UL-OC-TC	5301	4000	45
48" Strip - TC	61283	TPAL48-5L-50K-UL-TC	5301	4000	45
48" Strip - TC	61281	TPAL48-5L-50K-UL-TS	5301	4000	45
48" Strip - TS	61227	TPAL48-5L-50K-UL	5476	5000	45
48" Strip Light - OS	60825	TPAL48-5L-50K-DM-EM	5476	5000	45
48" Strip Light - OS	60829	TPAL48-5L-50K-UL-DM-EM	5476	5000	45
48" Strip - TC	61302	TPAL48-5L-50K-UL-EM-TC	5476	5000	45
48" Strip Light - OS	60830	TPAL48-5L-50K-UL-OC-EM	5476	5000	45
48" Strip - TC	61299	TPAL48-5L-50KUL-TC	5476	5000	45
48" Strip -TS	61228	TPAL48-5L-50K-UL-TS	5476	5000	45
96" Strip - TC	61290	TPAL96-8L-40K-ULEM-TC	8766	4000	45
96" Strip - TC	61289	TPAL96-8L-40K-UL-OC-TC	8766	4000	70
96" Strip -TC	61287	TPAL96-8L-40K-UL-TC	8766	4000	70
96" Strip - TS	61253	TPAL96-8L-40K-UL-TS	8766	4000	70
96" Strip Light - OS	60835	TPAL98-8L-50K-UL-DM-EM	8944	5000	70
96" Strip - TC	61308	TPAL96-8L50K-UL-EM-TC	8944	5000	70
96" Strip Light - OS	60833	TPAL96-8L-50K-UL-OC	8944	5000	70
96" Strip -TC	61307	TPAL96-8L-50K-OC-TC	8944	5000	70
96" Strip - TC	61305	TPAL96-8L-50K-UL-TC	8944	5000	70
96" Strip - TS	61269	TPAL96-8L-50K-UL-TS	8944	5000	70
Strip Remote	61342	RMSTEM	N/A	N/A	N/A
TC Cord / 120V plug	61311	TC cord	N/A	N/A	N/A
TS Cord with special end	61331	TS Cord with special end	N/A	N/A	N/A

OS = Old Standard w/ 8" Input Wire
 TS = Tandem Seamless
 TC = Standard/Tandem Cord
 DM = Dimmer
 OC = Occupancy Sensor
 EM = Emergency Backup
 *EM available with remote (Part #61324)

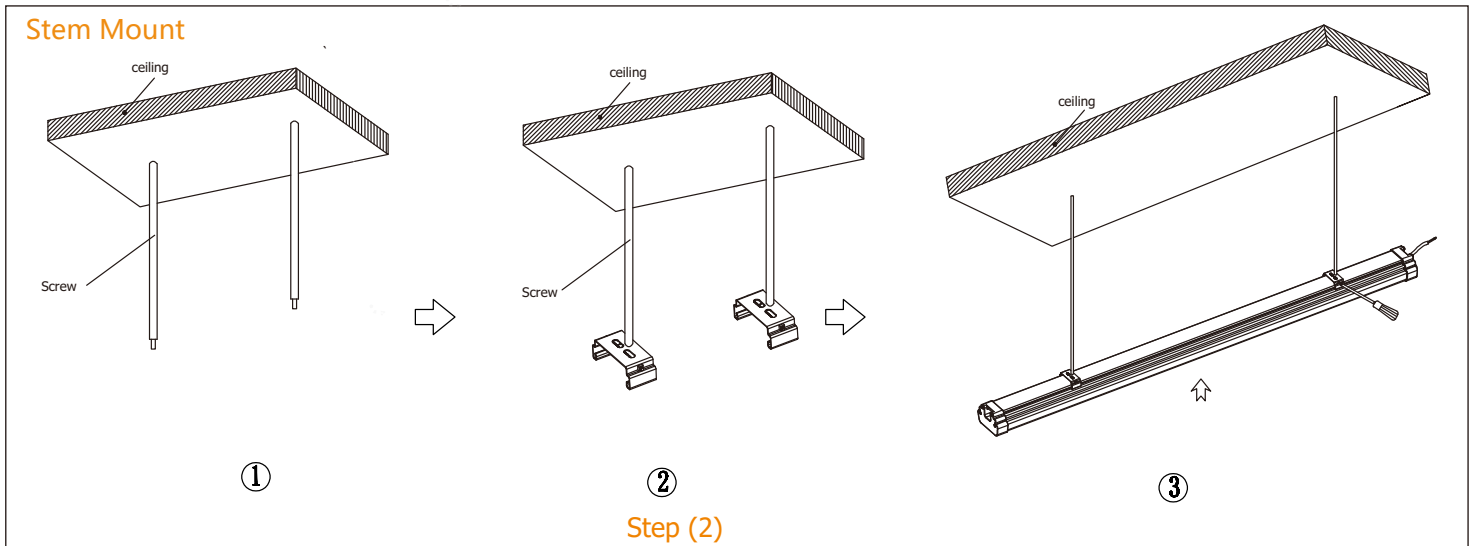


Installation Instructions

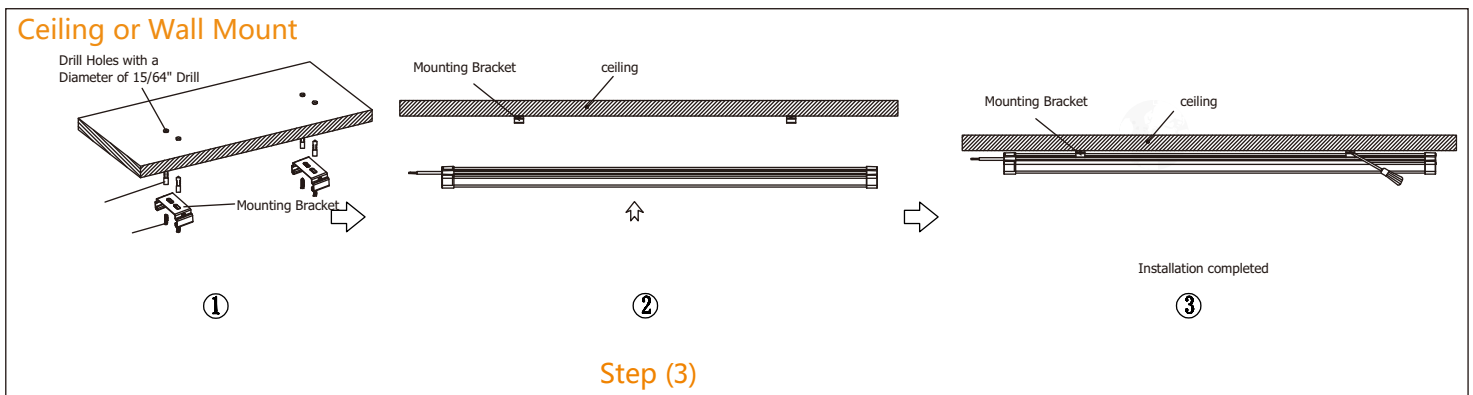
Cable Suspension



Stem Mount



Ceiling or Wall Mount



Options:



(Hanging Kits)
#61009



(PG 9 connector)
#61144



(connector for seamless connection)
#61141



6' Whip
#61143



(Mounting Kit)
#61145



Diagram of remote control(Emergency)

#61324

Dimension



Type TS



Type TC

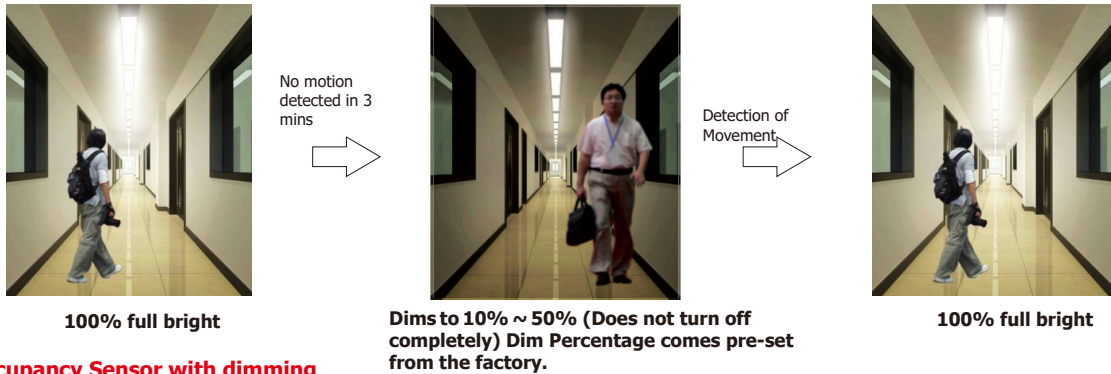
Model	L(inches)		L2 (Inches)	W (Inches)	H (Inches)
	TS	TC	TS / TC	TS / TC	TS / TC
TPAL24	23.6	25.6	21.3	3.7	2.4
TPAL48	47.2	49.2	44.9	3.7	2.4
TPAL96	94.5	96.5	92.1	3.7	2.4

Model No.	Net Weight (LBS)	Qty(pcs /CTN)	Gross Weight/CTN(LBS)	Carton Size (Inches)
TPAL24	14.55	6	17.11	L30.32*W9.06*H9.25
TPAL48	23.55	6	28.35	L53.94*W9.06*H9.25
TPAL96	47.09	6	56.70	L101.18*W9.06*H9.25

Product Application Instructions—Sensor (Occupancy Sensor)

- This fixture uses microwave sensor integrated within fixture end cap ,with the radius from 16ft to 32ft.
- Smart Sensor including Sensor without Dimming (Picture 1) and Sensor with Dimming (Picture 2) .

Occupancy Sensor



Occupancy Sensor with dimming

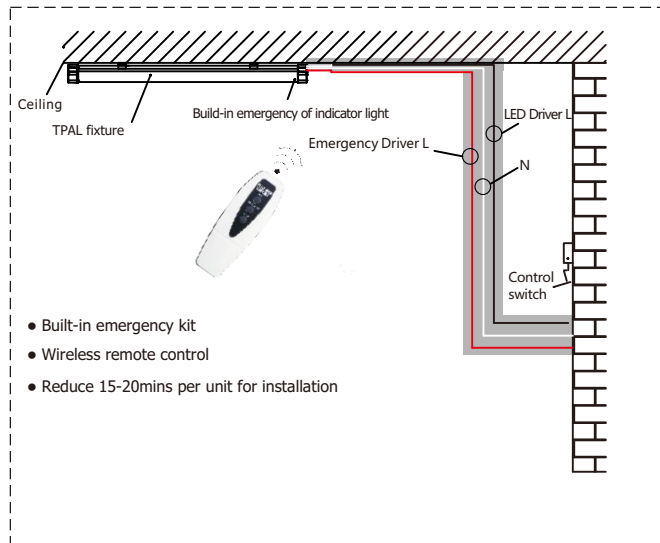


Standard Setting (Other Settings Available and need to be identified when order is placed)

Occupancy Sensor Hold Time	1 Minute	3 Minutes	5 Minutes	Custom
Sensor to Dim Level	20%	30%	50%	Custom
Sensor Stand by Period	1 Minute	5 Minutes	10 Minutes	Disable

—Emergency (Remote Controller Required) Remote - Part #61324

- High Temp. Ni-MH battery. Compact in size, longer lifetime, safer in practical use, RoHS compliant;
- The nickel-metal hydride batteries can be repeated 500 charge-discharge cycles by correct operation;
- After leaving factory, the emergency battery turns itself into a dormant state to avoid electric discharge and leakage;



—Controller

- The utilization of wireless IR remote controller:

Button#1: TEST (Press this button, switch to emergency lighting model. Emergency indicator light turns red)

Button#2: DISCHARGE (Press this button, battery starts to discharge, emergency indicator shows up red until electrical discharge process is over. 5 sec later, this lamp switches to normal working state);

Button#3: STOP

1. Stop discharge (pause discharge when in emergency status)
2. Cancel automatic discharge (keep pressing button 3 seconds, when red indicator flicker once, means closed every 3 month automatic discharge function.)
3. Start automatic discharge (keep pressing button 3 seconds, when red indicator continues flicker, means start every 3 month automatic discharge function.)

